

New Sonair

Low-energy ventilation in a high-noise environment



Brink Climate Systems introduces the Sonair of the third generation.

The Sonair is a wall ventilation appliance for use in high-noise environments such as near airports, railways or busy motorways. The New Sonair is characterised by its even more compact design, a low-energy EC fan integrated in the wall sleeve, and a front finish that can be matched to the interior.

HOW IT WORKS

The Sonair is placed on the inside of the exterior wall. The Sonair fan, placed in the wall sleeve, sucks in outdoor air through an opening in the exterior wall. The Sonair features a soundproofing compartment that limits the sound of the fan as well as outside sound to the minimum.

The fresh air is supplied to the room through a filter. The supplied quantity of fresh outdoor air is set with push buttons at the side of the Sonair.

VERSION

The New Sonair comes as standard in the colour white (RAL 9010). In addition, various front finishes are available so the Sonair can be matched to any material or, conversely, make a statement.

WALLS UNDER HIGH NOISE LEVELS

The Sonair is an excellent choice for projects where deadening of outdoor sound is necessary. The Sonair enables soundproofing across the exterior wall up to 52 dB(A). A large range of outdoor grilles also enables integration of the Sonair in the exterior wall.



The new Sonair is characterised by its even more compact design and a low energy EC fan, and it is excellently suitable for projects where deadening of outside noise is required.



Climate Systems

New Sonair

Low-energy ventilation in a high-noise environment

AIR FILTERING

The Sonair comes as standard with an air filter (filter class G3). This filter is used under normal dust load. The filter removes 70 to 85% of the particles larger than 10 µm. Sand, textile threads, hairs and spores come in this category. Optionally available is a fine dust filter (filter class F7) that filters for instance also pollen.

FILTER TABLE

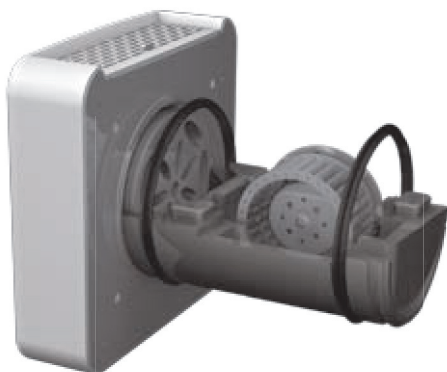
Filter	G3	F7
Dust (10 µm)	••	••
Dust (2.5 µm)		••
Pollen	•	••
Spores	•	••
Hairs	••	••
Sand	••	••
Textile threads	•	••
Cement dust	•	••

• = good

•• = very good

SIMPLE INSTALLATION

The Sonair can simply be mounted on the inside of an exterior wall. A wall sleeve of 180 mm and a 230 V power supply suffice to effectively ventilate without causing noise nuisance.



The fan section is integrated in the wall sleeve. The sound level is kept low by keeping the fan outside the room.

BENEFITS

- Highly compact design
- Efficient deadening of outside noise
- Very simple pushbutton operation
- Fan section integrated in wall sleeve
- Choice of front finishes



The front finish can be matched to the interior.

AVAILABILITY

The New Sonair is available from mid-August 2010.

TECHNICAL DATA

Technical data	Sonair
Ventilation capacity [m³/h]	0-125 in 6 settings
Rated power [W]	9 at 75 m³/h
Deadening outside noise [dBA]	> 52
System sound [dBA]	< 30 at 60 m³/h
Filter class air filter	Standard G3, optional F7
Diameter wall sleeve [mm]	Ø180
H X W X D [mm]	285 x 285 x 85

WANT TO KNOW MORE ?

Do you want more information on the New Sonair? Then please call Brink Climate Systems B.V. for an appointment free of engagement.

Member of



Distributed by:



Ubbink (UK) Ltd, 81 Cherry Orchard Industrial Estate, Ballyfermot, Dublin 10.
Tel: 01 – 626 2600 Email: info@brinkclimatesystems.ie www.brinkclimatesystems.ie

Member of

